

Contract Manufacturing AS9100B:2004 ISO 9001:2000
Distributor Wide Range of Materials Customer-Furnished Stock
Managed Inventory Large Parts Small Parts Production
Machining Kanban Centers Vertical Machining Centers
Production Vertical Machining AS9100B:2004 Centers
Cellular Manufacturing Lean Manufacturing Kanban Vendor-Managed
Inventory **Contract Machining** Furnished Stock ISO 9001:2000
ISO 9001:2000 Cellular Manufacturing Value Lean Manufacturing
Large Parts Lean Manufacturing Kanban Vendor-Managed
Contract Manufacturing Cellular Manufacturing Part
Contract Centers Vertical Machining Centers Turning
Aluminum Horizontal Machining Warehouse Distributor Wide
Range of Materials Customer-Furnished Stock AS9100B:2004
Contract Manufacturing Centers ISO 9001:2000 AS9100B:2004
Kanban Small Parts Vendor-Managed Inventory Small Parts
Machining Centers Vertical Machining Centers Kanban Vendor-Managed
Inventory Large Parts Production Engineering Horizontal Machining
Distributor Wide Range of Materials Kanban Turning Warehouse
Manufacturing Kanban Large Parts Small Parts Production
Machining Lean Manufacturing AS9100B:2004 ISO 9001:2000
Cellular Manufacturing Kanban Vendor-Managed Inventory
Large Parts Small Parts Production Vertical Machining Engineering
Aluminum Warehouse Distributor Wide Range of Materials
Horizontal Machining centers Centers Turning Manufacturing
Customer-Furnished Vendor-Managed Inventory Contract Manufacturing
AS9100B:2004 Cellular Manufacturing AS9100B:2004
Furnished Solutions Manufacturing AS9100B:2004 ISO 9001:2000
Engineering Horizontal Machining Centers Vertical Machining
Centers Turning Aluminum Warehouse Distributor Wide Range of Materials



TCL Precision Metals



We machine repeat production runs of consistently high-quality parts delivered whenever you need them: daily, weekly, monthly, and quarterly. From a few pieces to volume runs, you get the same consistent quality from the first part to the last. We make all your parts using documented manufacturing and quality processes certified to both ISO 9001:2000 and AS 9100B:2004 standards.

We use a variety of vertical machining centers (VMCs), bridge mills with pallets, horizontal machining centers (HMCs) with and without pallet pools, and turning centers. We often custom configure machines into work cells to increase productivity. Plus, we're constantly implementing state of the art technology.

Whether your parts are large or small and made of aluminum, carbon steel, ductile iron, stainless steel, titanium, or other material, we're experienced at machining them. Plus, we can save you time and costs by ordering materials direct from the mills – we're a warehouse distributor for Alcoa, Hulett, and Kaiser. We make our own machine-ready blanks on specially-configured dedicated equipment. This reduces lead times and helps produce consistently higher quality parts.

Typically, we service customers in a wide variety of markets, including industrial equipment, semiconductor, oil tool, medical, and aerospace/defense. From time-to-time, we invest with customers to reconfigure work cells and make process changes. This allows us to deliver good parts at a fair price. On time. Period.

Work Flow



Cellular Manufacturing

Take advantage of shorter lead times, lower inventory, and improved quality with our custom-configured work cells. They move material from process to process, eliminating delays during the hand-off between different processes and/or departments.

Lean Manufacturing

Completing a two-year lean initiative has allowed us to cut lead-times and costs, passing the savings along to you. Additionally, we can provide smaller lots of parts with more frequent deliveries, eliminating batch and queue to save you time and improve your cash flow. For example, you can order four lots of 25 parts, instead of tying up cash and space buying 100 parts.

Kanban

Improve your cash flow and reduce your space requirements, handling, damaged parts, and shrinkage with our kanban system. Using a computer-generated kanban as the nerve system of our JIT production and order entry system, we can produce parts according to your requirements to better control work-in-progress, production, and inventory flow. Limit your inventory build up and reduce the lead time for parts with our kanban system.

Vendor-Managed Inventory

Reduce your inventory and stock-outs while improving productivity with our vendor-managed inventory (VMI) programs. We cut your costs by focusing delivery times on actual needs and replenishing your parts from your finished goods inventory as you consume them.

Parts – Large and Small



Larger Parts

We can machine most parts that fit in a work envelope up to 166" x 55" x 20". Using large multi-pallet Mazak VMCs and Viper VMC bridge/gantry mills, we can make quick work of your large part requirements. For large turned parts, our Mori Seiki and Haas CNC turning centers turn parts up to a 15-inch diameter and as long as 80".

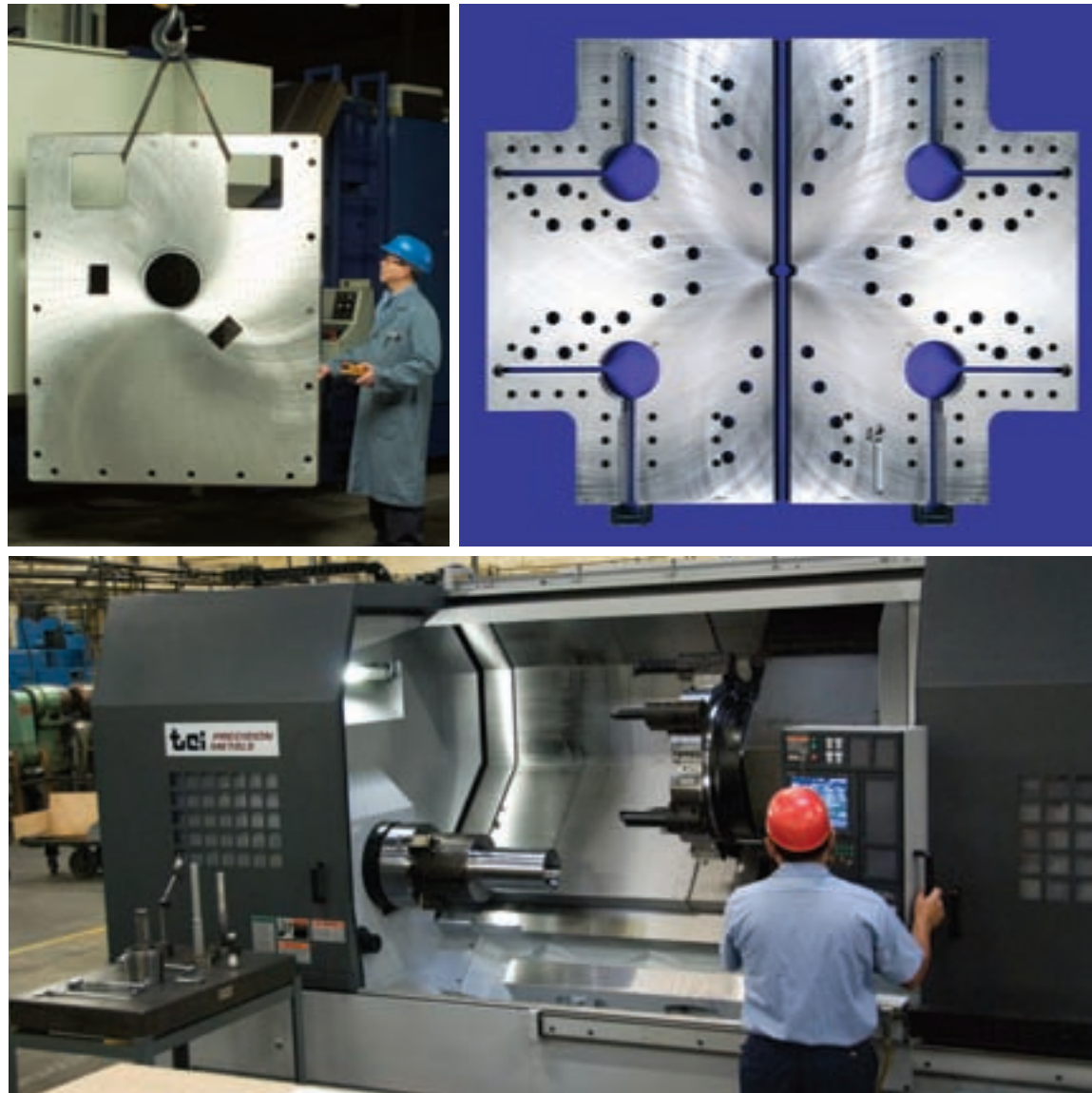
Smaller Parts

For smaller parts, our VMCs allow quick setups to get into production fast. We can also configure our Mori Seiki HMCs to machine different parts on each pallet/tombstone or the same part on every pallet. Either way, our Mori Seikis will cut even your largest run down to size. For smaller turned parts, Okuma and Mori Seiki CNC turning centers ensure the highest quality.

Production Engineering

Your designers can work with our production engineering team to help ensure part designs that preserve functionality, while significantly reducing costs. We have most of the leading CAM software programs, so you can be sure we can handle your electronic files and deliver a finished part that meets your designer's intent. We also apply tool path optimization software to reduce machining time and save you money.

Machining



Horizontal Machining

Get cost efficient low- and high-volume repetitive runs of production parts from our HMCs. Our Mori Seiki HMC with a Six Carrier Pallet Pool is among the newest and most versatile available. It makes quick work of repeat production runs. Since tooling and fixturing is always in place and ready for the next release, we can provide parts on repeat runs almost immediately. Our other HMCs are configured to handle parts that require frequent shipments with dimensions up to 40" x 120".

Vertical Machining

Whether your production parts are small or large, as long as 166", as wide as 77", or weigh up to 8,000 lbs., we can machine them. We handle a wide range of parts and repetitive volumes on smaller VMCs and large bridge mills. Some of our larger VMCs are equipped with an extra pallet and table, allowing virtual "single-minute exchange of parts" increasing efficiency and cutting costs. We pass the savings along to you.

Turning

Our Mori Seiki, Okuma, and Haas CNC turning centers produce parts with up to a 15" diameter and 80" long. Weighing as much as 500 lbs., these parts are turned to close tolerances, tight concentricity, complex features, and fine finishes. Many of our turning centers are configured in cells, allowing simultaneous turning and milling operations that reduce the wait time between processes.

Materials

Aluminum Warehouse Distributor

Take advantage of our material availability know-how, competitive pricing, and quick turnaround. For years, we've been an aluminum warehouse distributor for Alcoa, Hulett, and Kaiser. We know how to source material that will save you time and money.

Wide Range of Materials

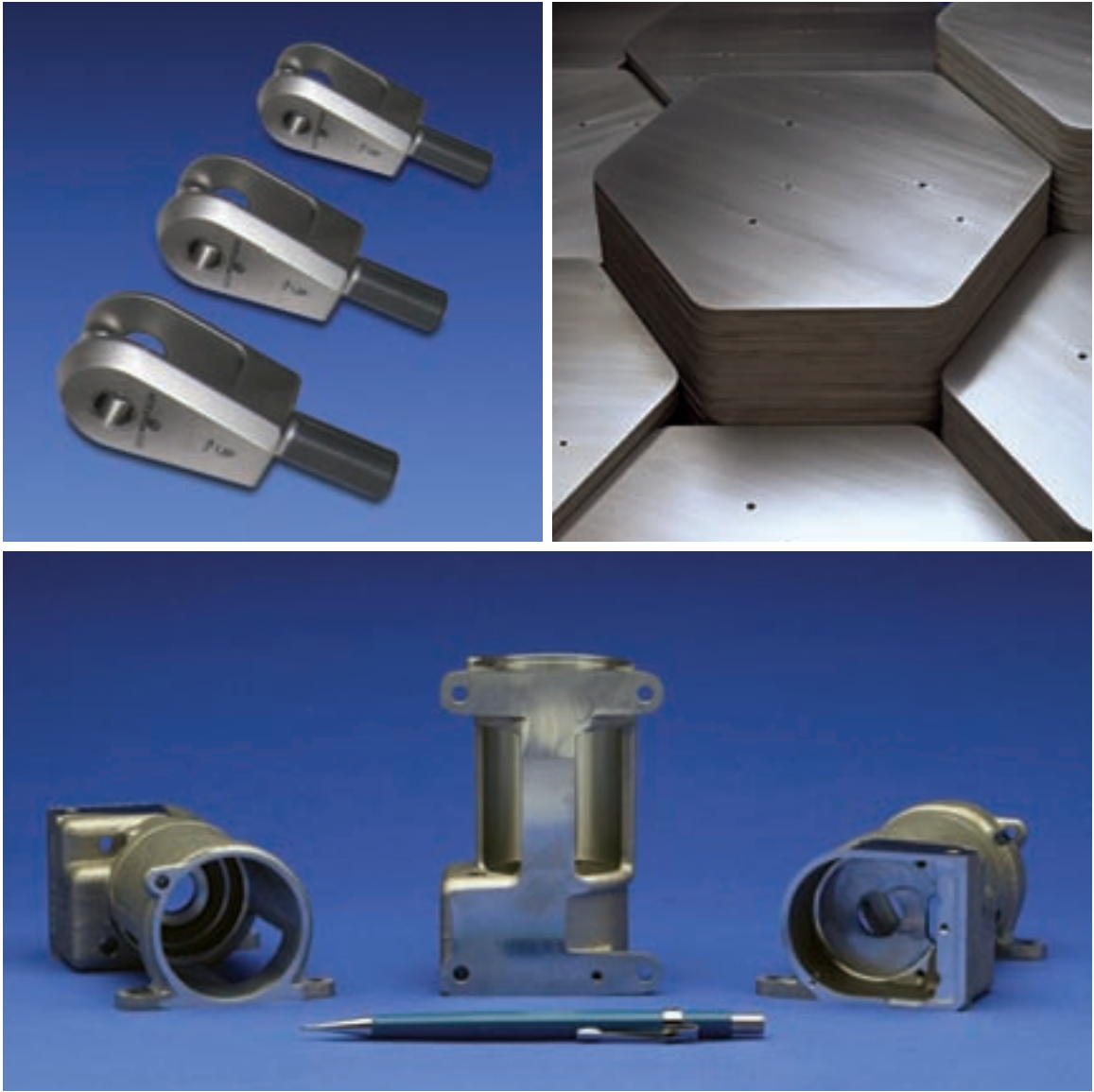
In addition to our aluminum stock, we regularly supply the materials listed below.

MATERIALS		CONFIGURATIONS	
STAINLESS STEEL	TOOL STEELS	CASTINGS	PLATE
BRASS	HIGHTEMP & NICKEL-	EXTRUSIONS	SHEET
COPPER	BASED ALLOYS	FORGINGS	ROD
TITANIUM	GRAY CAST IRON	WELDMENTS	BAR
PLASTICS	DUCTILE IRON		
CARBON STEELS	MANY OTHERS		

Customer-Furnished Stock

We welcome your furnished material, regardless of its configuration; from your dock or your supplier's dock, directly to ours.

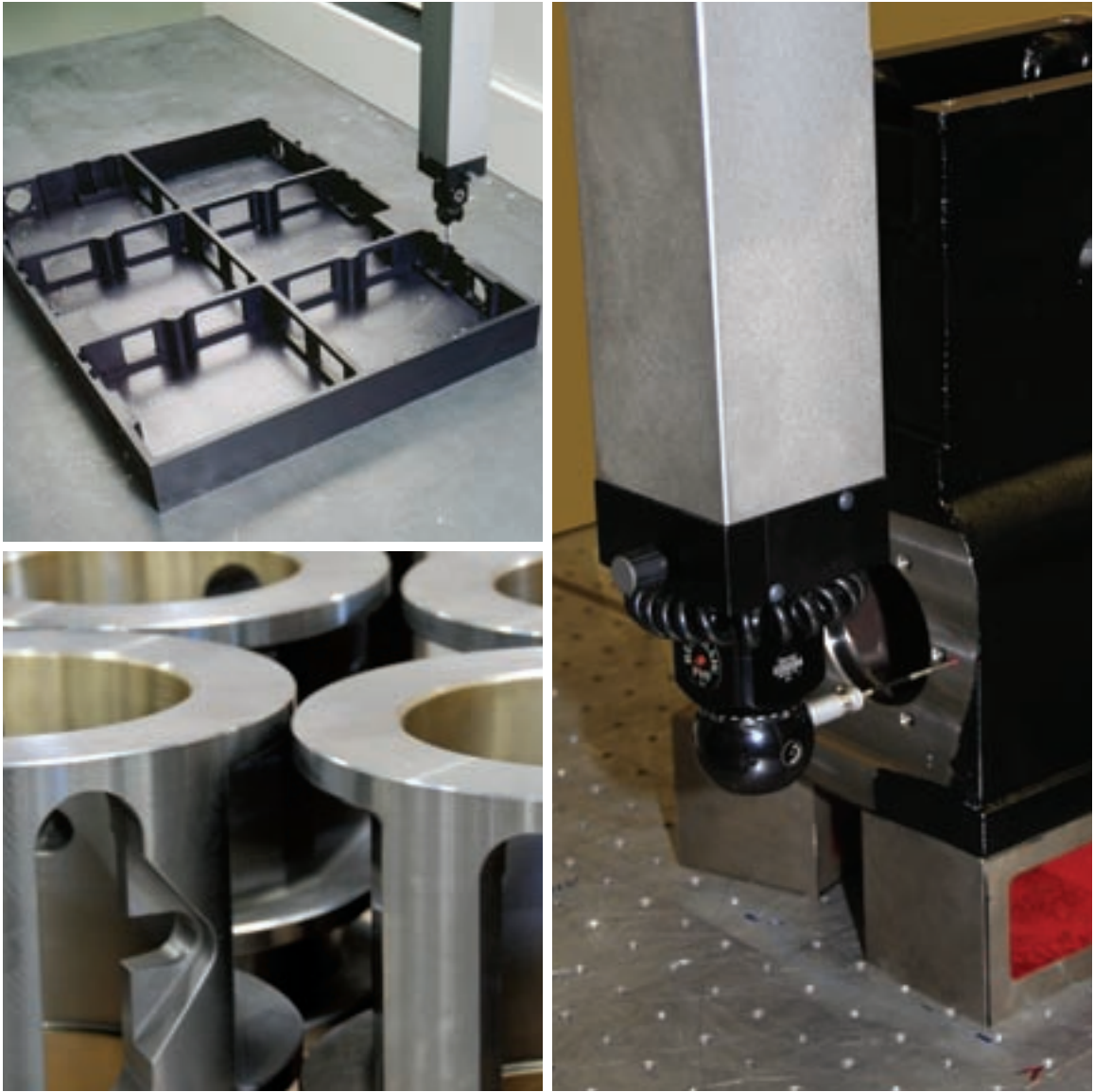
CASTINGS	FORGINGS	PLATE	ROD
EXTRUSIONS	WELDMENTS	SHEET	BAR



Quality Processes

In addition to our continuing ISO 9001:2000 certification, we are certified to AS 9100B:2004. This certifies our quality management, processes, and product quality to meet requirements specific to the aerospace community. Specifically, AS 9100B:2004 ensures our comprehensive quality system focuses on areas directly impacting product safety and reliability in the aerospace industry. The value to all of our customers includes documented quality management and manufacturing processes that ensure repeatable accuracy from part to part.

Depending on your requirements, we qualify parts in our temperature-controlled, 2,500-square foot, quality assurance room. We have three coordinate measuring machines (CMMs), including a Mitutoyo BRT-1220 CNC CMM with travels of X-79", Y-48", Z-40", and a resolution of .00002". When requested, we can supply individual inspection reports for finish-machined parts to help minimize your incoming inspection time.



Send Your RFQ

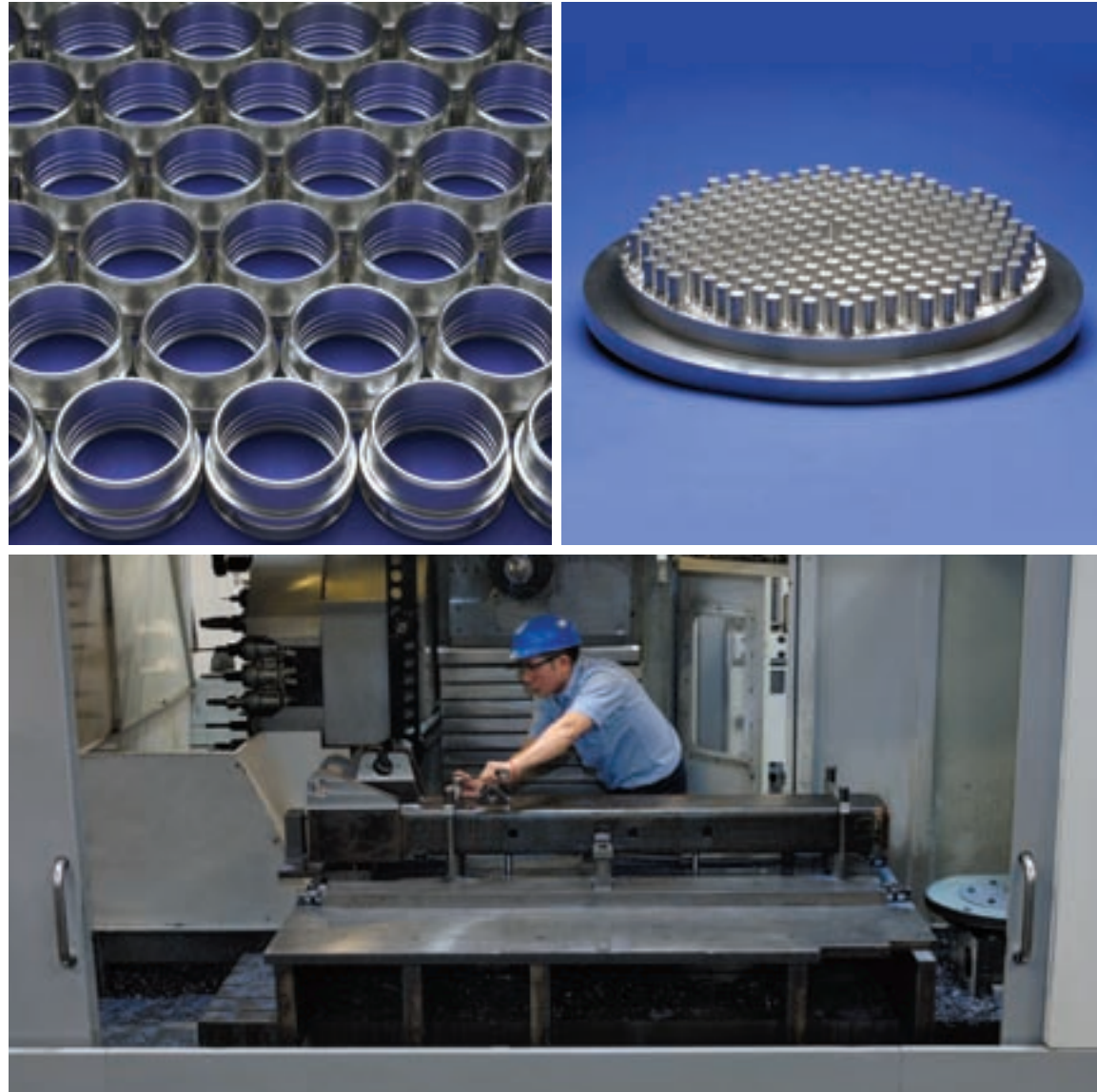
Send us your RFQs through our website for a quick response. Using your web browser, go to www.tciprecision.com. At the top right, click “RFQ” or click “Get a Quote” at the bottom center and fill out the RFQ. Typically, we’ll send an acknowledgement with any questions within a few hours or less.

Take a Tour

One crucial factor you won’t get from a brochure or website: the people. Visit our facility, see the possibilities, but more importantly, meet the people responsible for making everything happen from estimating to shipping. Watch us in action and see for yourself how we work together to ensure on-time delivery of quality parts.

Call or email any one of our customer service personnel or management team to schedule a personal visit today.

**Good Parts.
On Time.
Period.**





tciprecision ***PRECISION
METALS***

240 East Rosecrans Ave, Gardena, CA 90248
Tel: 800-234-5613 310-323-5613 Fax: 310-323-1255
www.tciprecision.com



©2009 TCI Precision Metals. All rights reserved.